

SECURITY & DATA SHARING PLATFORMS: GET ON THE RIGHT TRACK!


To configure a secure data sharing platform, you need to think about the right levels of access.


Train stations have multiple levels of access – this can be used as a way to think about cyber security in data sharing platforms.


Data sharing platforms are critical for enabling the transition to Net Zero.


Data sharing platforms are online databases which facilitate accessing information and collaborating across organisations.

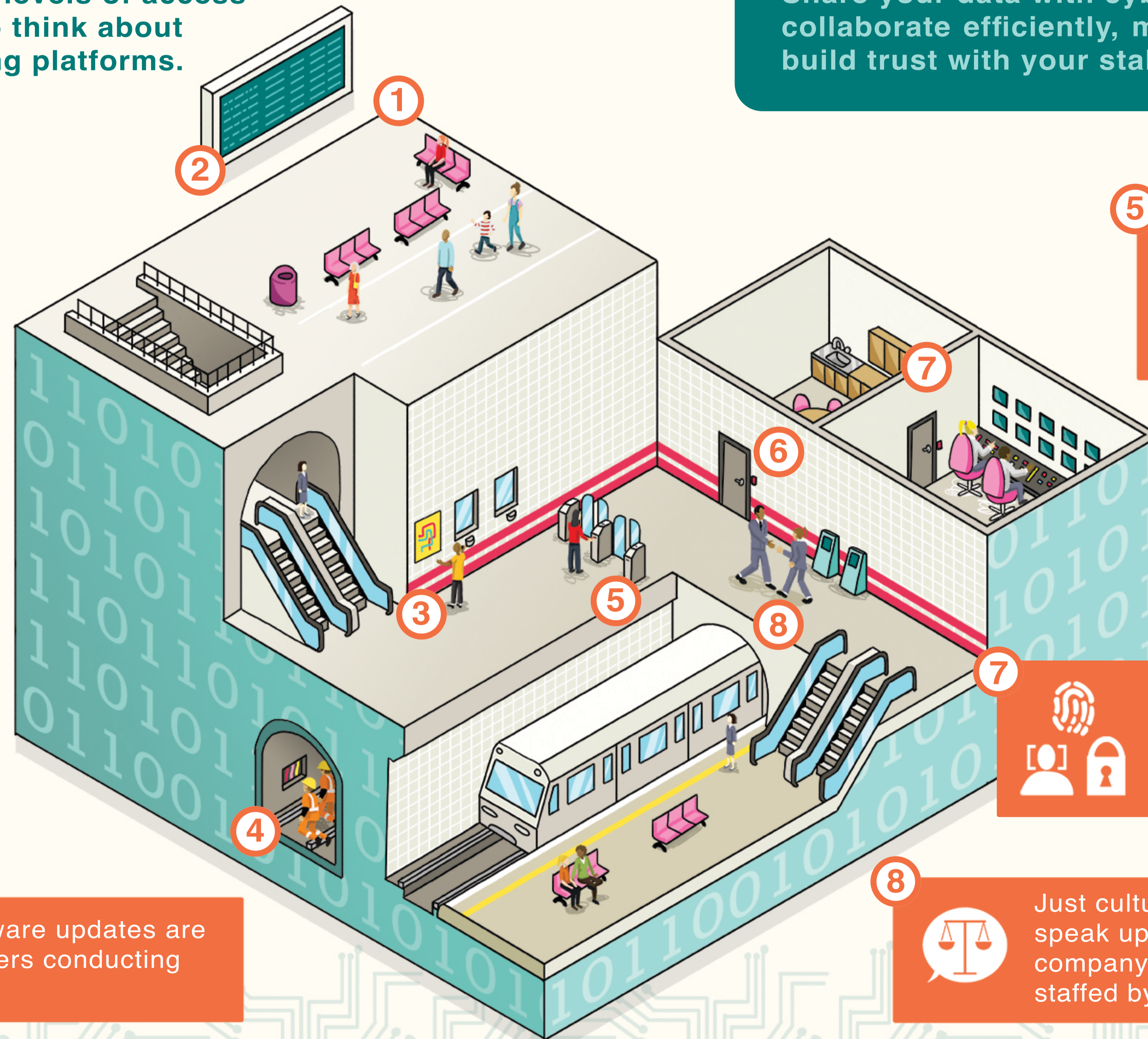
Share your data with cyber security in mind to collaborate efficiently, manage business risks and build trust with your stakeholders and customers.


1  Your website is a public concourse.


2  Public information on your website is analogous to the information boards anyone can see.


3  People accessing information about your company are passengers finding their trains.


4  Patching and software updates are maintenance workers conducting engineering work.



5  People accessing shared data on your website upon registration are just like passengers who can access the platforms via ticket gates.

6  Password-protected company information is a 'staff only' area accessed by a key card.

7  Multi-factor authentication for sensitive and personal data corresponds to the most critical areas like control rooms, which need additional levels of protection.

8  Just culture, where employees are free to speak up about any issues arising in the company is analogous to train stations staffed by happy workers.

Find out more about the project here:
<https://tinyurl.com/NewGridandI>

This image was co-designed with Energy Systems Catapult as a part of the "NewGrid and I" project. We would like to thank The University of Bristol for sponsoring this work.

